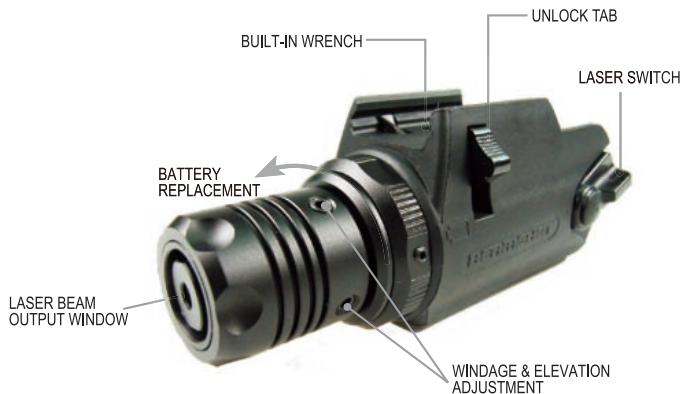


BEAMSHOT®

GB 8300 S Green Laser Sight Instruction Manual

US patent : 6874269
578599

Construction

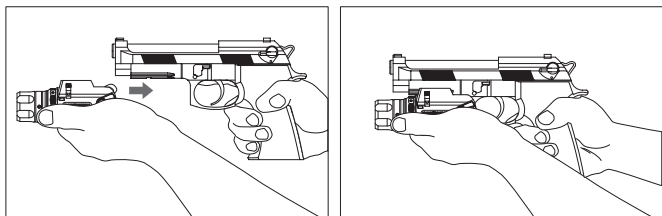


SPECIFICATIONS

Available colors:	Black (type III hard anodized)
Dimensions (L x ø):	3.97"(L)x1.57"(W)x1.7"(H)
Weight:	4.41 oz.(including batt)
Construction:	Head : Aerospace-grade Aluminun Body : Durable plastic
Battery Life:	4 hrs / 1xCR123A
Wavelength / Range:	532 nm / 500 yards(nighttime range)
Power:	<5 mW, Class IIIa
Dot Size:	1/2" @10 yards, 5" @100 yards
Laser Operation:	An ambidextrous Momentary and Constant-On switch
Windage&Elevation Adjustment:	3 ft.@10 yards, 30 ft.@100 yards

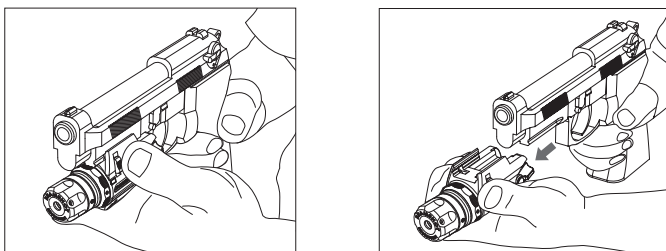
Mounting

After first checking to insure that the weapon is unloaded and has no ammunition in the chamber, match the mounting groove on the laser unit with the utility rail of your weapon. Firmly slide the unit onto the rail. When mounting to a pistol, slide the unit back to the trigger guard, when mounting on the utility rail of a tactical weapon slide the unit to the desired location, the two latch tabs will lock into the transverse groove securely locking this unit onto your weapon.



Removal

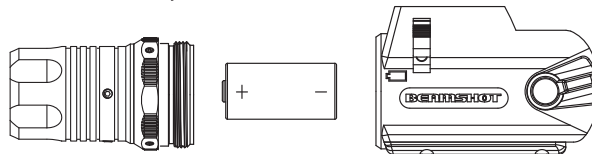
When removing this unit from a weapon insure that the weapon is unloaded and has no ammunition in the chamber. While gripping the weapon use your thumb and index finger to pull down on the two latch tabs to unlock the combo from the utility rail and firmly slide the unit forward off of the mounting rail.



Battery Replacement

Warning: If battery replacement is performed while unit is mounted to a weapon insure that the weapon is unloaded and that the weapon has no ammunition in the chamber.

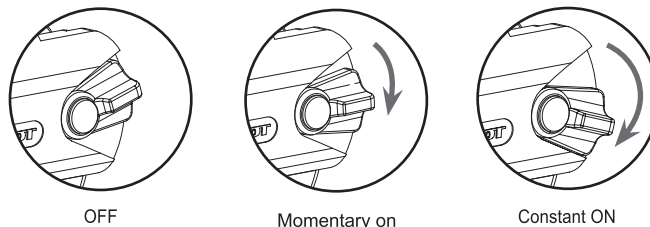
1. Using your thumb and index finger rotate the lens bezel counter clockwise removing it from the unit. Remove the old battery and replace it with a new 3V lithium battery. Before inserting the battery match the direction with the battery symbol on the housing exterior.
2. After new battery is installed replace the head unit by treading back into the housing clockwise making sure not to cross thread the laser head or housing.
3. If you plan to store your combo for any length of time it is always a good idea to remove the battery from the unit.



General Operation

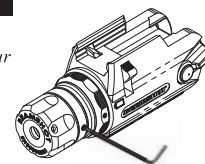
This unit has been designed to create a tactical tool which after becoming familiar with operation becomes second nature. The following instructions are brief and straight forward as is the operation of our Laser Sight unit.

Laser activation is performed by simply moving the on/off switch to the ON position; this switch can be activated ambidextrously from either side of the unit. Making this unit equally comfortable for right and left handed operation. Momentary on/off can be activated by simply pushing the laser activation switch far enough to activate the laser and holding it on, releasing the switch it will automatically return to the off position. Pressing the laser activation lever to locked position will provide a constant on laser feature.



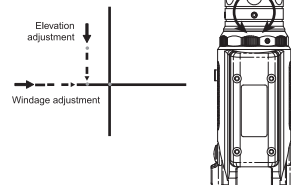
Adjusting the Laser Beam

Before beginning the adjustment process, insure that your weapon is unloaded and there is no ammunition in the chamber. During laser alignment make sure to always keep your weapon pointed in a safe direction away from others and never place your finger on the trigger.

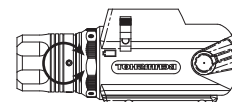


Using a standard 25 yard indoor target place your weapon in a gun vise using your front and rear sights to zero your weapon on the target.

To make windage and elevation adjustments use the built-in wrench to rotate the adjustment screws to zero laser beam on target "see for screw location".



Never over tighten the adjustment screws taking your time to carefully bring the weapon sights and dot produced by the laser beam together to mark your target. Small adjustments and weapon safety are key to proper laser alignment.



Laser Safety Warning

- This laser product is classified as Class IIIa according to 21 CFR 1040.
- Avoid all eye contact. Never look directly into the laser lens even if the laser is off.
- Do not look into the laser beam through binoculars or telescopes.
- Do not point the laser beam at reflective surfaces.

AVOID EXPOSURE
Laser radiation is emitted from this aperture

DANGER

LASER RADIATION - AVOID DIRECT EYE EXPOSURE

Wavelength: 520-540nm
Max. Output: <5mW
Class IIIa Laser Product
Manufacture: Quarton inc,
5F, 175, Sec. 2, Ta-Tung Rd.,
Hsi-Chih, Taipei Hsien,
Taiwan, R.O.C.
Model no., BEAMSHOT® 8300
Made in Taiwan
Manufacture Date: Sep. 2007
This product complies with
21 CFR 1040.10 & 1040.11