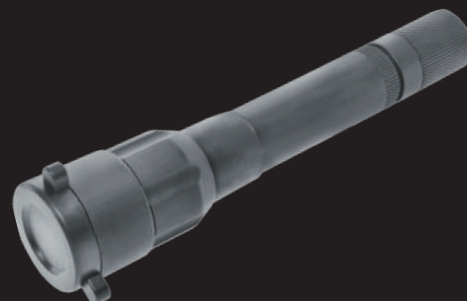


LF150 / LF150-IR940

High-Power IR laser Flashlight with beam adjustable function

Introducing our High-Power IR Laser Device, engineered for precise target pointing and illumination over vast distances. With an adjustable beam function from 0.4 mRad to 13 degrees, it maximizes illumination for NVDs, digital scopes, or cameras, reaching distances of up to 10 miles. Its compact design allows effortless use as an IR flashlight or mounting on any weapon.



Military and Law Enforcement

The Patented Switch includes a LED indicator for efficient battery management. This feature prevents unnecessary battery drainage by providing a convenient way to identify laser usage.



IR Laser OFF



IR Laser ON

The IR Laser Illuminator is designed with features that minimize the red glow emitted from the front, helping to reduce position exposure.



IR LED



IR Laser

Power by either a CR123A or AA battery, offering you the utmost convenience in power options.



CR123A battery

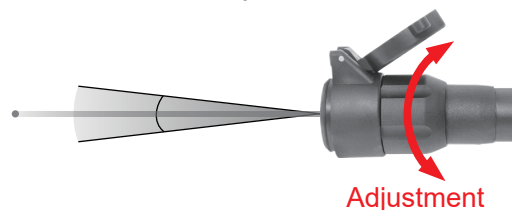


AA battery

When set to its tightest focus of 0.4 mRad, the LF-150 becomes an outstanding IR laser sight. It can be seen by night vision devices even at distances of more than 10 miles.

When adjusting the beam to its widest divergence of 13 degrees, this wider beam setting helps you to light up a broader field of view or when engaging targets within closer proximity.

0.4 mRad
13°



Optional accessories:

M1-Q Quick-Release Mount - it allows you to mount on shotgun / rifle which have 1913 rail in seconds.

CT2 Pressure Pad 10" Long Switch.



SPECIFICATION	LF150	LF150-IR940
Dimensions / Weight	30 x L127.5 mm (1.18"x 5.01") / 60±10 g (2.11±0.35 oz)	
Laser type / Wavelength	IR Laser / 840 nm	IR Laser / 940 nm
Construction	Aluminum 6061 T6 , Black Hard Anodized	
Power supply / Battery Life	1 x CR123A lithium battery - 4 hrs. or 1 x AA alkaline battery - 2 hrs or 1 x recharge AA alkaline battery - 40 minutes	
Output power / Laser class	150mW, CW mode / Class IIb laser	
Beam Divergence	Adjustable 0.4 mRad ~ 13°	
Range	Approximately 0 ~ 10 miles	
Switch / Operating Function	ON/OFF switch with LED indicator / Constant ON/OFF	